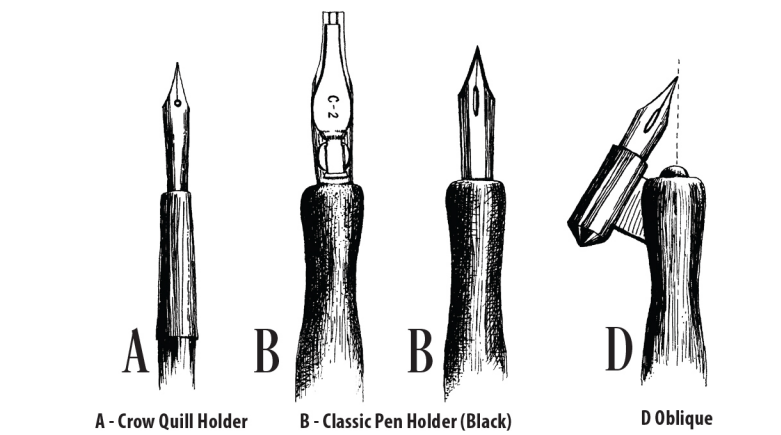




Elementary exercises leading into the construction of the straight letters made with size #2 style 'B' round tip pen. The best results are secured with the paper or card data on the desk slightly to the right of center and turned a trifle to the left. Sit erect, close to the desk, keeping the feet flat on the floor or the foot rest. Don't lean on your pen.

Speedball Drawing & Lettering Tools



A - Crow Quill Holder B - Classic Pen Holder (Black) B - Classic Pen Holder (Black) D - Oblique
Illustrations by Janet Takahashi with a Hawk Quill pen. See page 11; Speedball Textbook, 24th Ed.

THREE PEN HOLDER TYPES AVAILABLE:
A-CROW QUILL FINE POINT, B-STANDARD and D-OBLIQUE
Standard pen nibs have a larger, half-round body which only fits a standard pen holder. The standard pen holder is also used for scratch art and linoleum cutters.



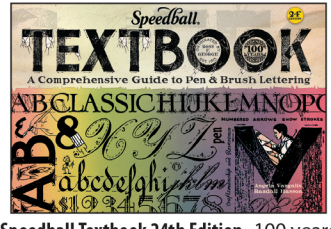
Hunt 102 Crow Quill Hunt 107 Hawk Quill Hunt 108 Litho Hawk Quill
A - Hunt Crow Quill Holder



Speedball Fountain Pen
Available in three widths. Fine (1.1mm), Medium (1.5mm) and Broad (1.9mm). Ink cartridges are available in six colors: Black, Blue, Red, Purple, Green, and Pink.

The Speedball Textbook

Foundational hand lettered with a C-Series nib
Julian Waters. See page 26; Speedball Textbook, 24th Ed.



Speedball Textbook 24th Edition - 100 years of Instructional Lettering. 120 pages.



Vanity Roman Alphabet by Ross F. George.
See page 37; Speedball Textbook, 24th Ed.

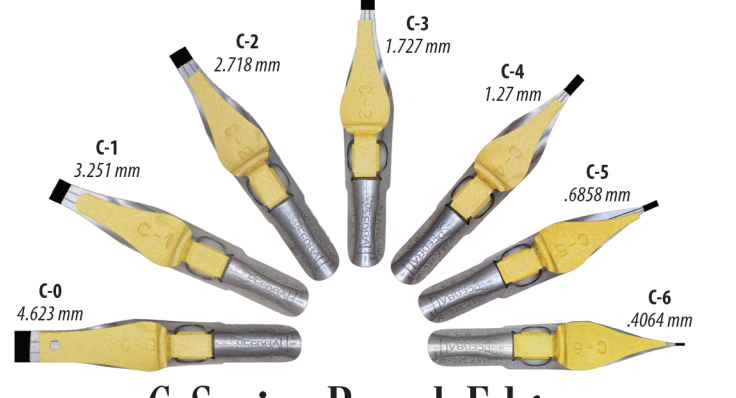
abcde fghijklmnopqr



A-Series Broad-Edge

A-Series Nib - Available in 6 widths - A-0, A-1, A-2, A-3, A-4, A-5.
This unique dual purpose nib creates a broad, square edged stroke with the foot of the nib AND a fine line stroke when flipped over on its back!

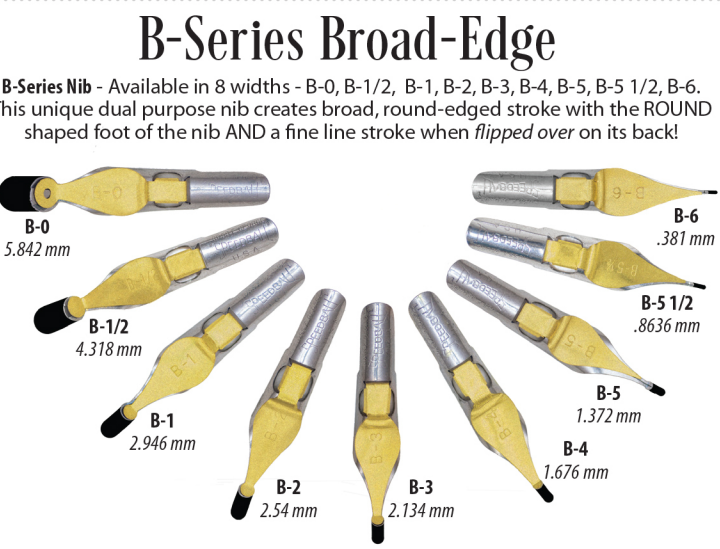
1234567890



C-Series Broad-Edge

C-Series Nib - Left Hand - Available in 6 widths - C-0, C-1, C-2, C-3, C-4, C-5, C-6.
Created to emulate the quill, this universal nib makes a broad, ribbon-like stroke for traditional calligraphic styles like Foundational, Italic, Uncial, and Blackletter.

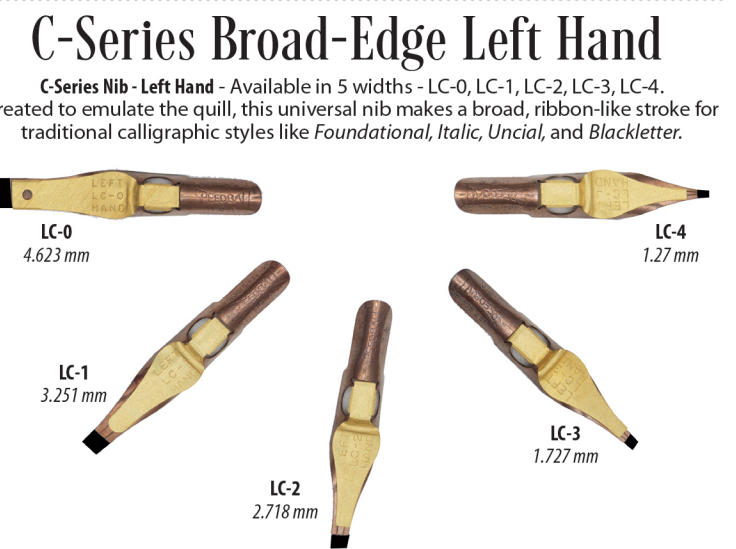
123456789



B-Series Broad-Edge

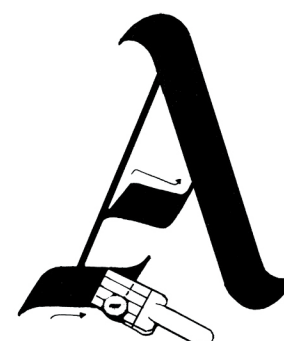
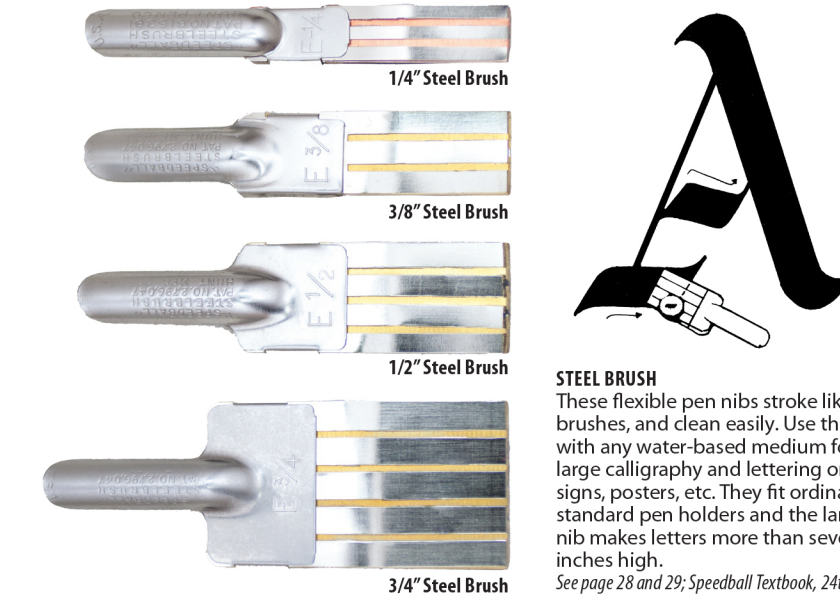
B-Series Nib - Available in 8 widths - B-0, B-1/2, B-1, B-2, B-3, B-4, B-5, B-5 1/2, B-6.
This unique dual purpose nib creates a broad, round-edged stroke with the ROUND shaped foot of the nib AND a fine line stroke when flipped over on its back!

ABCDEFGHIJ



C-Series Broad-Edge Left Hand

C-Series Nib - Left Hand - Available in 5 widths - LC-0, LC-1, LC-2, LC-3, LC-4.
Created to emulate the quill, this universal nib makes a broad, ribbon-like stroke for traditional calligraphic styles like Foundational, Italic, Uncial, and Blackletter.



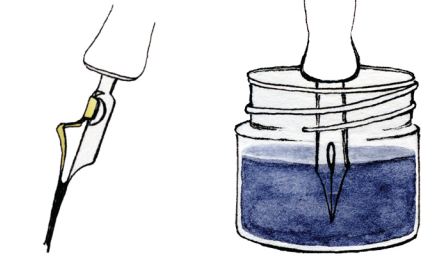
STEEL BRUSH
These flexible pen nibs stroke like brushes, and clean easily. Use them with any water-based medium for large calligraphy and lettering on signs, posters, etc. They fit ordinary standard pen holders and the largest nib makes letters more than seven inches high.
See page 28 and 29; Speedball Textbook, 24th Ed.

Super Black India Ink



Made from highly opaque, carbon black pigment, this ink offers excellent reproduction quality on absorbent surfaces with optimum light-fastness. Easily applied by brush, pen, steel brush or airbrush, it's formula is free flowing, non-clogging and waterproof.

How To Load A Pen



Dip the pen nib half-way up the reservoir. Dip pen to middle of keyhole opening of nib.
See page 13; Speedball Textbook, 24th Ed.

abcdefghijklmnopqrstuvwxyz

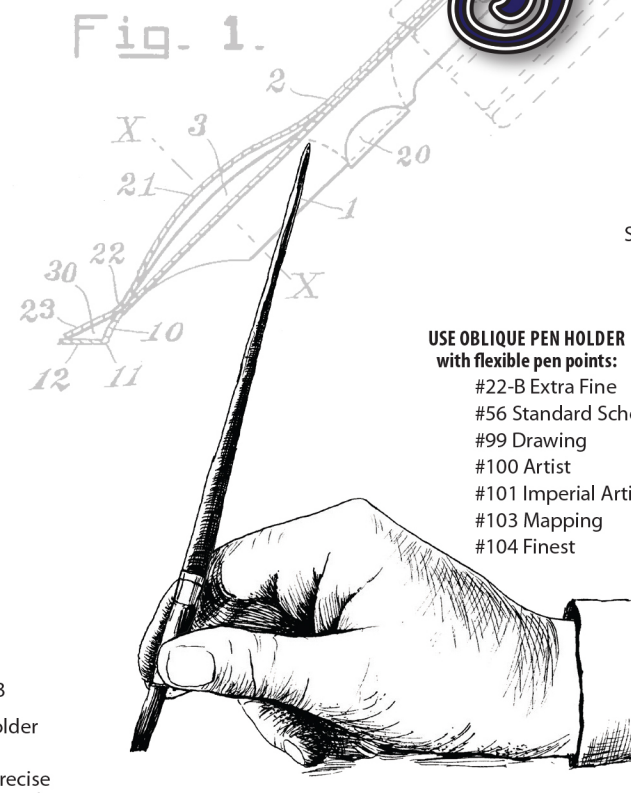


Fig. 1.

USE OBLIQUE PEN HOLDER with flexible pen points:
#22-B Extra Fine
#56 Standard School
#99 Drawing
#100 Artist
#101 Imperial Artist
#103 Mapping
#104 Finest



HUNT PEN POINTS

Made from the finest steel and handcrafted in the USA.
Use B-STANDARD or D-OBLIQUE Holder

- #22-B EXTRA FINE: Medium stiff, bronze finish, for ornamental work and ruling.
- #56 STANDARD SCHOOL: Stiff tip, fine drawing pen for student use, bronze finish.
- #99 DRAWING: Extremely flexible nib with extra fine point.
- #100 ARTIST: Small, flexible, and delicate. Suitable for writing at x-heights of 1/8" or less.
- #101 IMPERIAL ARTIST: Flexible tip for pressurized lettering styles Copperplate and Spencerian.
- #102 CROW QUILL: America's most popular art pen. Superfine and flexible. Use Crow Quill holder.
- #103 MAPPING ROUND POINTED: Specialized for delicate work and details, lines and lettering. More flexible and less fragile than the 100.
- #104 FINEST DRAWING: Superfine art pen for fine hairlines and small detail. Use #104 pen holder (not shown).
- #107 HAWK QUILL: Superfine point, stiffer than #102, very durable. For long, even lines and cross-hatching details. Use Crow Quill holder.
- #108 LITHO HAWK QUILL: Superfine point for superfine lines and shades with slight pressure and cross-hatching and flourishing details. Use Crow Quill holder.
- #512 BOWL POINTED: Fine pen for ruling and lettering.
- #513 EF-GLOBE: Extra fine bowl pointed for industrial arts.

Gothic Splendor

Barry Morentz
See page 111; Speedball Textbook, 24th Ed.



Super Pigmented Acrylic Ink

Speedball's rich, vivid calligraphy inks are formulated from the best pigments on earth. These high-quality inks are ideal for a variety of techniques including calligraphy, drawing, stamping, airbrushing, and scrap-booking. Inks are inter-mixable, waterproof, light-fast, acid-free and archival, providing artists and crafters the best possible results.



ABCDEFGHIJKLMNOPQRSTUVWXYZ



1234567890ABCDEFGHIJklmnopqrstuvwxyzABCDEFGHIJKLMNOPQRSTUVWXYZ